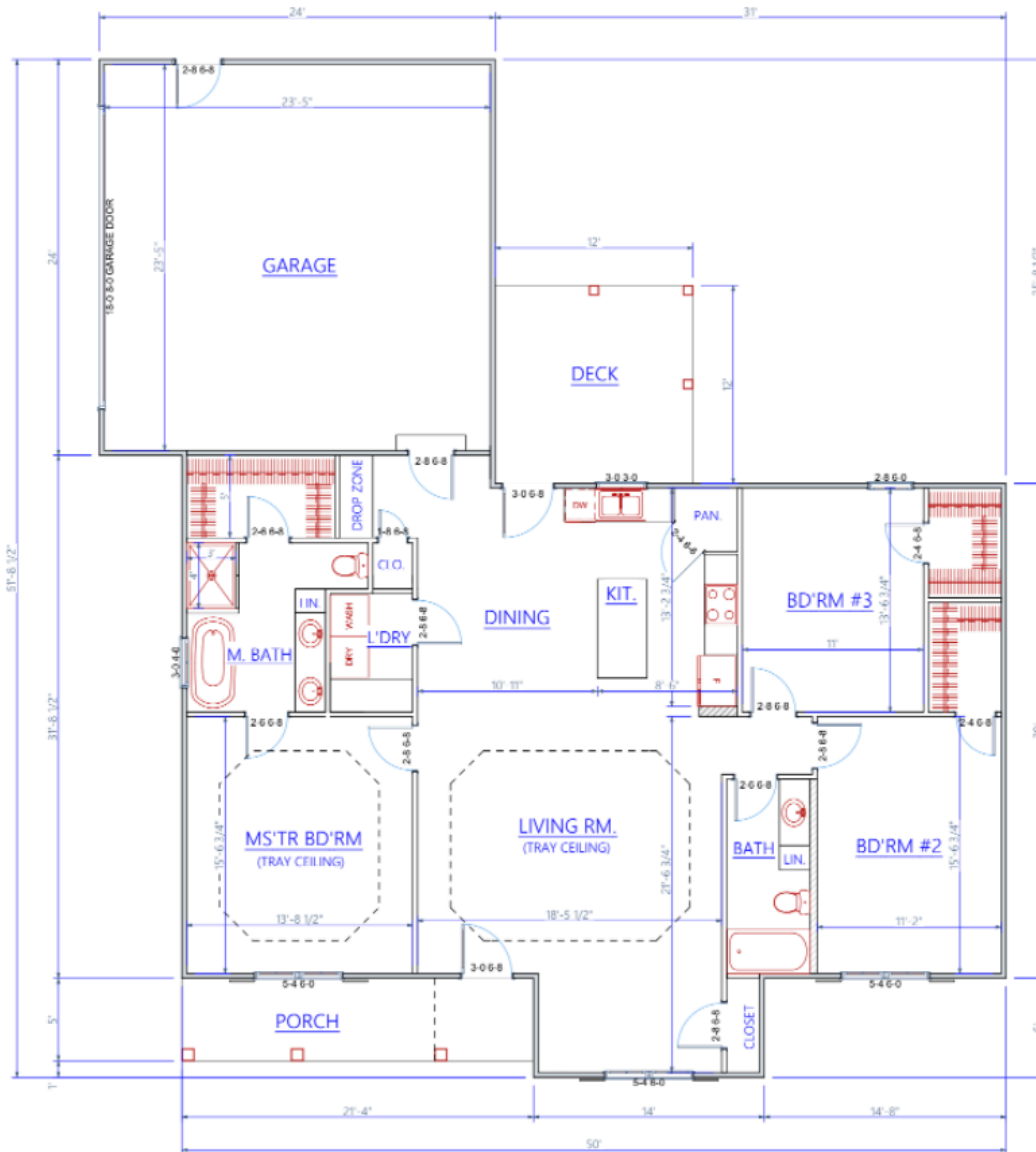


PLAN DESCRIPTION (VD1621)
OVERALL LENGTH: 55'
OVERALL DEPTH: 59'-8"
SQUARE FOOTAGE:
FIRST FLOOR LIVING AREA = 1,621 SQ. FT.
SECOND FLOOR LIVING AREA = 0
BONUS ROOM = 0
TOTAL SQ. FT. LIVING AREA = 1,596 SQ. FT.
GARAGE = 596 SQ. FT.
FRONT PORCH = 106 SQ. FT.
DFCK = 144 SQ. FT.
BEDROOMS - 3
BATHS = 2
GARAGE - 2 CAR
BONUS ROOM = NO
PRIMARY CEILING HEIGHT: 8'
WALL CONSTRUCTION: 2"x4" FRAME W/ SIDING & STONE
FOUNDATION TYPE: CRAWL SPACE
PRIMARY ROOF PITCH: 8/12



FIRST FLOOR PLAN

LIVING AREA = 1,621 SQ. FT.
 GARAGE = 569 SQ. FT.